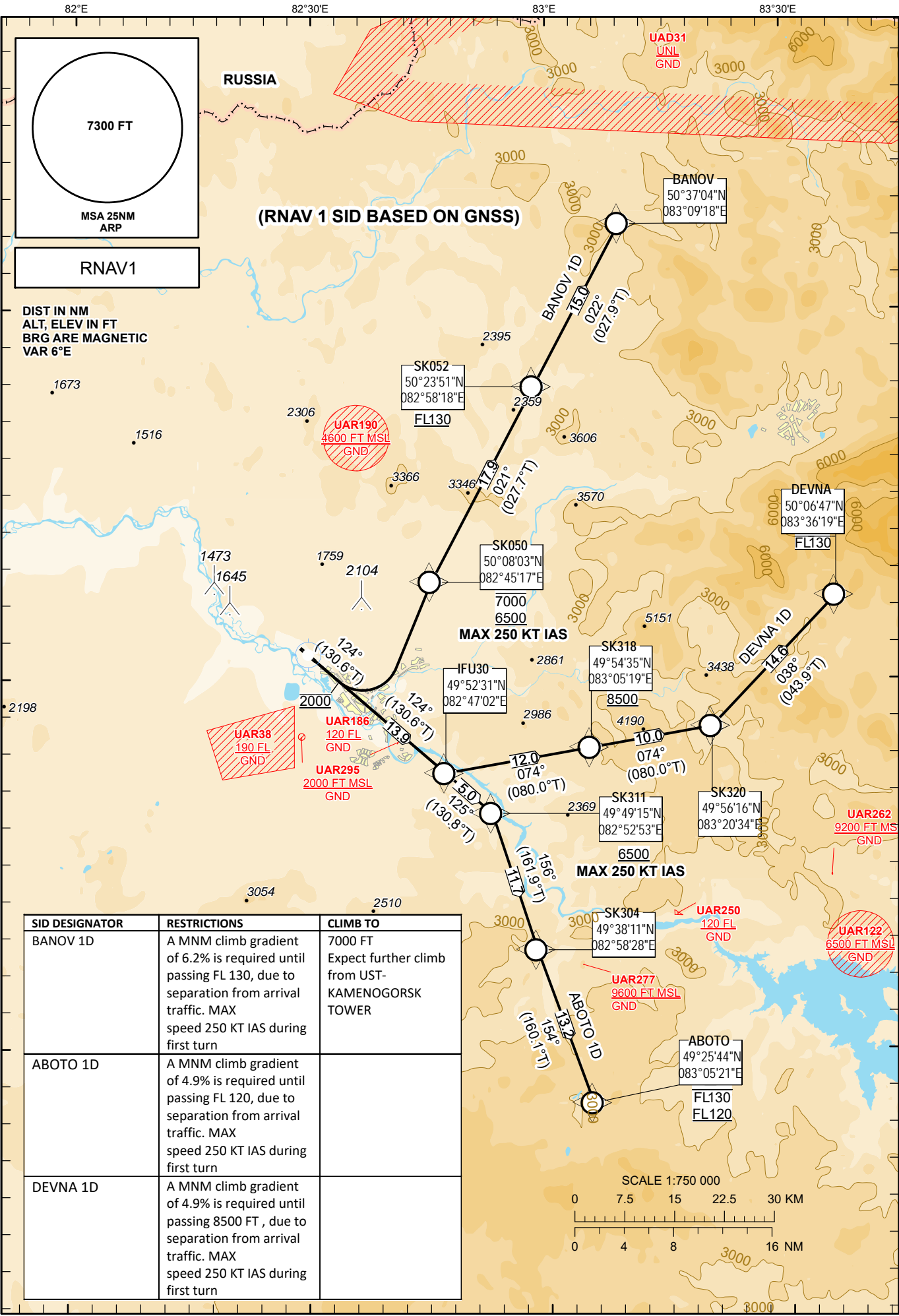


STANDARD DEPARTURE  
CHART - INSTRUMENT  
(SID) - ICAO

TRANSITION ALTITUDE  
10000 FT

UST-KAMENOGORSK TOWER 130.1  
UST-KAMENOGORSK ATIS (EN) 124.2  
UST-KAMENOGORSK ATIS (RU) 127.7

ABOTO 1D, BANOV 1D, UST-KAMENOGORSK  
DEVNA 1D RWY 12



CHANGE: Add ATIS, editorial.

TABULAR DESCRIPTION											
ABOTO 1D RWY12											
Serial Number	Path Descriptor	Waypoint Identifier	Fly - over	Course M(T)	Magnetic Variation()	Distance NM	Turn Direction	Altitude FT	Speed KT	VPA ()	Navigation Specification
10	CF	IFU30	-	124(130.6)	+6.3	13.9	-	-	-	2.7	RNAV 1
20	TF	SK311	-	125(130.8)	+6.3	5.0	-	+6500	-250	2.7	RNAV 1
30	TF	SK304	-	156(161.9)	+6.3	11.7	R	-	-	1.9	RNAV 1
40	TF	ABOTO	-	154(160.1)	+6.3	13.2	-	+FL120/-FL130	-	1.9	RNAV 1

WAYPOINT LIST		
ABOTO 1D		
Waypoint Identifier	Coordinates	
DEP	500133.96N	0823045.63E
IFU30	495231.44N	0824702.13E
SK311	494915.32N	0825252.63E
SK304	493810.82N	0825827.54E
ABOTO	492544.00N	0830521.00E

TABULAR DESCRIPTION											
BANOV 1D RWY12											
Serial Number	Path Descriptor	Waypoint Identifier	Fly - over	Course M(T)	Magnetic Variation()	Distance NM	Turn Direction	Altitude FT	Speed KT	VPA ()	Navigation Specification
10	CA	-	-	124(130.6)	+6.3	5.2	-	@2000	-	3.3	RNAV 1
20	DF	SK050	-	-	+6.3	13.1	L	-7000/+6500	-250	3.3	RNAV 1
30	TF	SK052	-	021(27.7)	+6.3	17.9	R	+FL130	-	3.3	RNAV 1
40	TF	BANOV	-	022(27.9)	+6.3	15.0	-	-	-	3.3	RNAV 1

WAYPOINT LIST		
BANOV 1D		
Waypoint Identifier	Coordinates	
DEP	500133.96N	0823045.63E
SK050	500802.62N	0824516.50E
SK052	502351.29N	0825817.55E
BANOV	503704.00N	0830918.00E

TABULAR DESCRIPTION											
DEVNA 1D RWY12											
Serial Number	Path Descriptor	Waypoint Identifier	Fly - over	Course M(T)	Magnetic Variation()	Distance NM	Turn Direction	Altitude FT	Speed KT	VPA ()	Navigation Specification
10	CF	IFU30	-	124(130.6)	+6.3	13.9	-	-	-250	-	RNAV 1
20	TF	SK318	-	074(80.0)	+6.3	12.0	L	+8500	-	2.8	RNAV 1
30	TF	SK320	-	074(80.0)	+6.3	10.0	-	-	-	-	RNAV 1
40	TF	DEVNA	-	038(43.9)	+6.3	14.6	L	@FL130	-	1.7	RNAV 1

WAYPOINT LIST		
DEVNA 1D		
Waypoint Identifier	Coordinates	
DEP	500133.96N	0823045.63E
IFU30	495231.44N	0824702.13E
SK318	495434.90N	0830519.04E
SK320	495615.51N	0832033.77E
DEVNA	500647.00N	0833619.00E